

**FREE
TRAINING**

A4500 VA5 PRO

HUGH TOUCHSCREEN TO ANALYZE
MACHINERY ON SITE



1 YEAR
WARRANTY



VA5^{PRO}

VIBRATION ANALYSIS
THERMAL IMAGING
ULTRASOUND
MEASUREMENT

EYESIGHT – HEARING – SENSITIVITY

WE HAVE IN COMMON



MASTER THE LANGUAGE OF YOUR MACHINERY

FORGET THE REST CHOOSE THE BEST



FFT WITH UP TO 3 276 800 LINES

90 KHZ FREQUENCY RANGE

RAW SIGNAL RECORDING

OVERALL, TIMEWAVE, SPECTRUM,
ORBIT, FRF, CENTERLINE ETC.

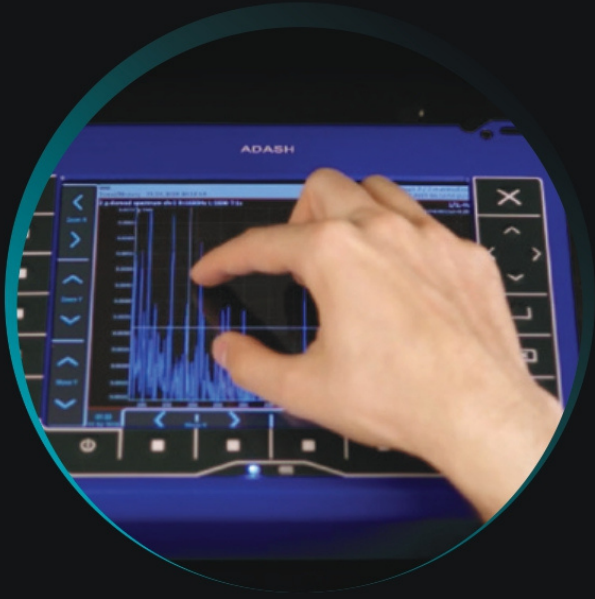
Enjoy a huge touchscreen to analyze your machinery on site.
Measure 4 vibration signal channels and 4 process value
channels (temperature, pressure etc.) along with speed
synchronously. Triaxial sensor friendly, proximity probes for
displacement measurement ready, balancer, octave analysis,
bump test, ODS, MCSA - you name it ...

8 CHANNEL SIGNAL ANALYZER

- › 4 AC inputs for vibration measurement
- › 4 DC inputs for process values measurement
- › Tacho input (speed/trigger)



VA5^{PRO}



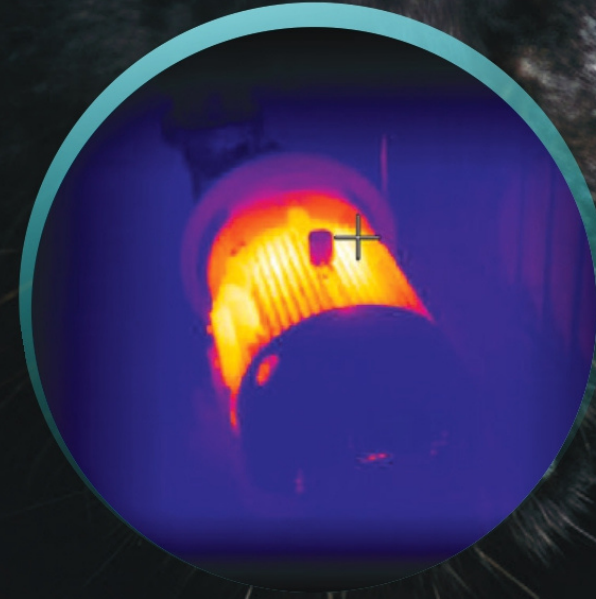
MULTITASKING ANALYZER

The VA5^{PRO} allows you to measure more measurement types synchronously. Overall values, FFTs, Time waveforms - on all 4 channels? No problem ...



YOU CAN HEAR IT

Ultrasound microphone for leak detection



YOU CAN SEE IT

Thermal imaging camera

- › Vibration analyzer
- › Balancer
- › RAW signal recorder
- › Thermal imaging camera
- › Machine faults autodetection
- › Route data collector
- › Sound analyzer
- › Operating Deflection Shapes
- › Ultrasound detector
- › Run Up - Coast down
- › Lubrication monitoring
- › Stethoscope



There is simply no way to show all the VA5^{PRO} measurement capabilities on 4 pages ... see www.adash.com

VA5^{PRO} SPECIFICATIONS

Input channels	<ul style="list-style-type: none"> 4 x AC, ICP® power supply on/off 4 x DC for process values 1 x TACHO for speed probe/external trigger
Input range	<ul style="list-style-type: none"> AC +/- 12 V peak-peak DC +/- 24V
AD conversion	<ul style="list-style-type: none"> 24 bit, 64 bit internal signal processing No AutoGain function!
Dynamic range S/N	<ul style="list-style-type: none"> 120 dB
Frequency ranges (-3 dB)	<ul style="list-style-type: none"> Maximum range: 0.35 Hz - 90 kHz (1 Ch, 194 kHz sampling) Maximum range: 0.35 Hz - 25 kHz (4 Ch, 64 kHz sampling) Minimum range: 0.35 Hz - 25 Hz (4 Ch, 64 Hz sampling)
Sampling mode	<ul style="list-style-type: none"> Fully simultaneous for 4 channels
FFT resolution	<ul style="list-style-type: none"> Min. 100 lines Max. 3 276 800 lines
Unit modes	<ul style="list-style-type: none"> Analyzer - analytical measurements Data collector - route measurements Balancer - 1 and 2 plane on site balancing Run up - run up and coast down measurements Recorder - raw signal recording for later post analysis Stethoscope - listening of the bearing/ machine noise FASIT - expert system for automatic fault detection Octave analyzer - hearable sound measurements Bump test - measurement of natural frequencies ADS - Animated Deflection Shapes (Operating deflection shapes) Ultrasound - measurement of ultrasound in 30 - 50 kHz range Camera IR Camera Gallery

Display	<ul style="list-style-type: none"> 1125 x 800 pixels
Built-in camera	<ul style="list-style-type: none"> 5 MPx, autofocus
Thermal imaging camera (optionally)	<ul style="list-style-type: none"> 384 x 288 pixels -10°C ~ 250°C temp. range 50 mK NETD sensitivity
Processor	<ul style="list-style-type: none"> Intel Atom 1.9 GHz
Memory, Route	<ul style="list-style-type: none"> 64 GB, max. 16 GB for one route, number of routes is limited by free memory only
Data processing	<ul style="list-style-type: none"> Real time FFT DEMOD - ENVELOPE analysis ACMT - low speed bearing analysis Order analysis User band pass analysis RPM measurement DC measurement Orbit measurement
Raw signal recorder	<ul style="list-style-type: none"> 64 kHz sampling frequency 4 Ch memory consumption 3 GB/hour 4 Ch total recording - 20 hours
Trigger	<ul style="list-style-type: none"> Manual, External, Signal level, Time Speed change, Time interval
Interface	<ul style="list-style-type: none"> USB 3.0, 2.0 compatible
Operating temperature range	<ul style="list-style-type: none"> -10°C to +50°C
Power	<ul style="list-style-type: none"> Battery 8 hours of operation, AC 230 V
Case	<ul style="list-style-type: none"> Aluminium heavy duty
Size & Weight	<ul style="list-style-type: none"> 29,5 x 23 x 4,9 cm, 2 Kg



Adash, spol. s r.o.

Hlubinska 32
702 00, Ostrava
Czech Republic

e-mail: info@adash.com
phone: +420 596 232 670

www.adash.com

© Adash 2019

MASTER THE LANGUAGE OF YOUR MACHINERY

